

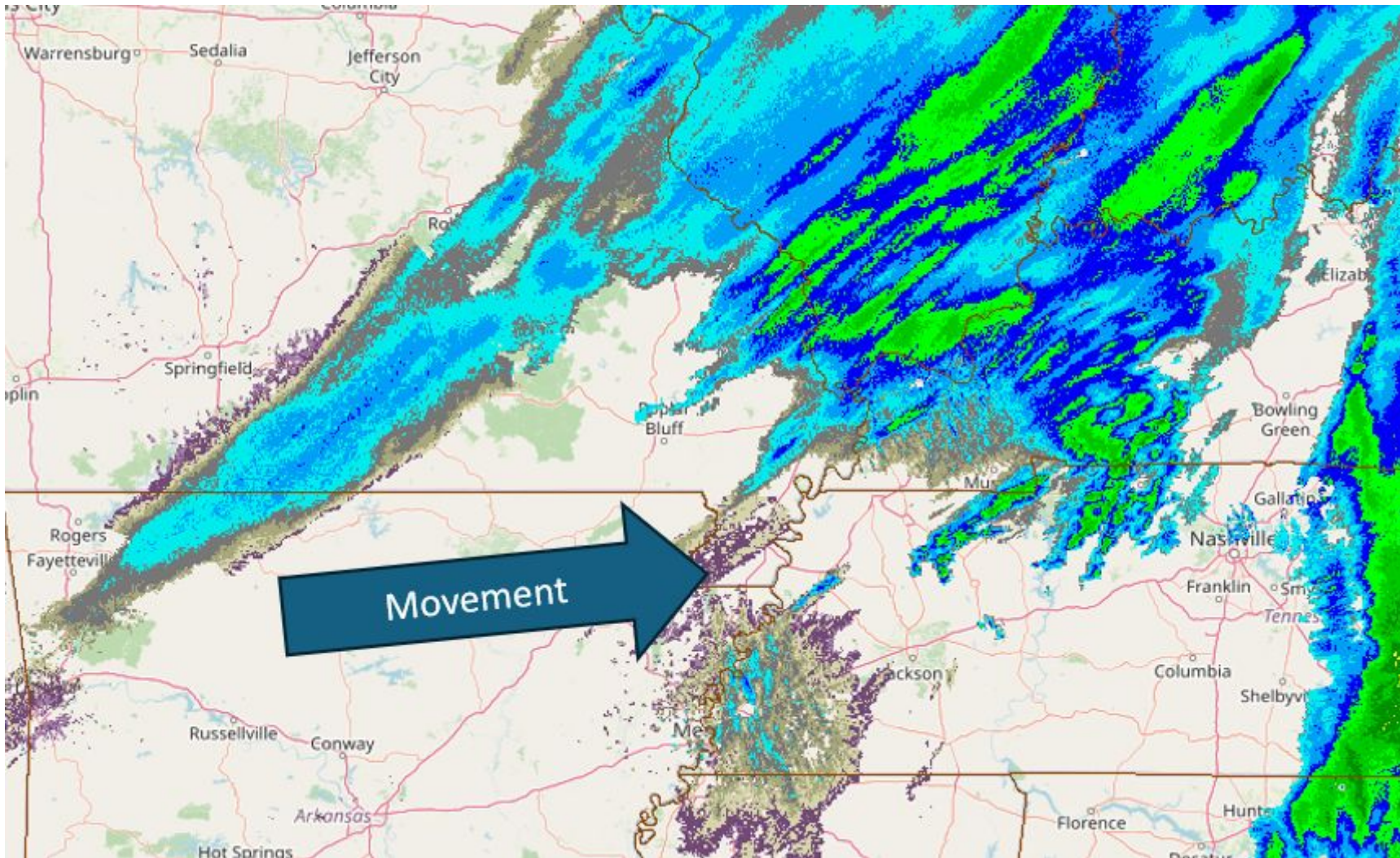


2 PM Winter Storm Update

January 25, 2026
2:04 PM CST

Very difficult travel conditions across the region due to heavy snow, sleet, and freezing rain!

Radar as of 1:45 PM CST Sunday



CHANGE THE WAY YOU DRIVE

- DON'T USE CRUISE**
Turn off your cruise control when driving on any slippery road surface.
- INCREASE DISTANCE**
Increase the distance between you and the car in front of you when driving on slippery surfaces.
- USE EXTRA CAUTION**
Bridges, overpasses, intersections and shaded areas will always pose additional driving risks.
- NO DISTRACTIONS**
Winter driving requires more concentration. Pay full attention to the road.
- 4WD/AWD**
Safety enhancements on vehicles will help but NOT prevent accidents.
- STAY IN YOUR LANE**
Avoid changing lanes unless needed and use the lane most recently plowed.
- NO QUICK MOTIONS**
Accelerate/decelerate and brake slowly rather than using quick maneuvers to reduce skidding and sliding.

SLOW DOWN!

National Weather Service | Paducah, KY

Light to moderate snow continues through about 5 to 6 pm.





Dangerously Cold Through Tuesday

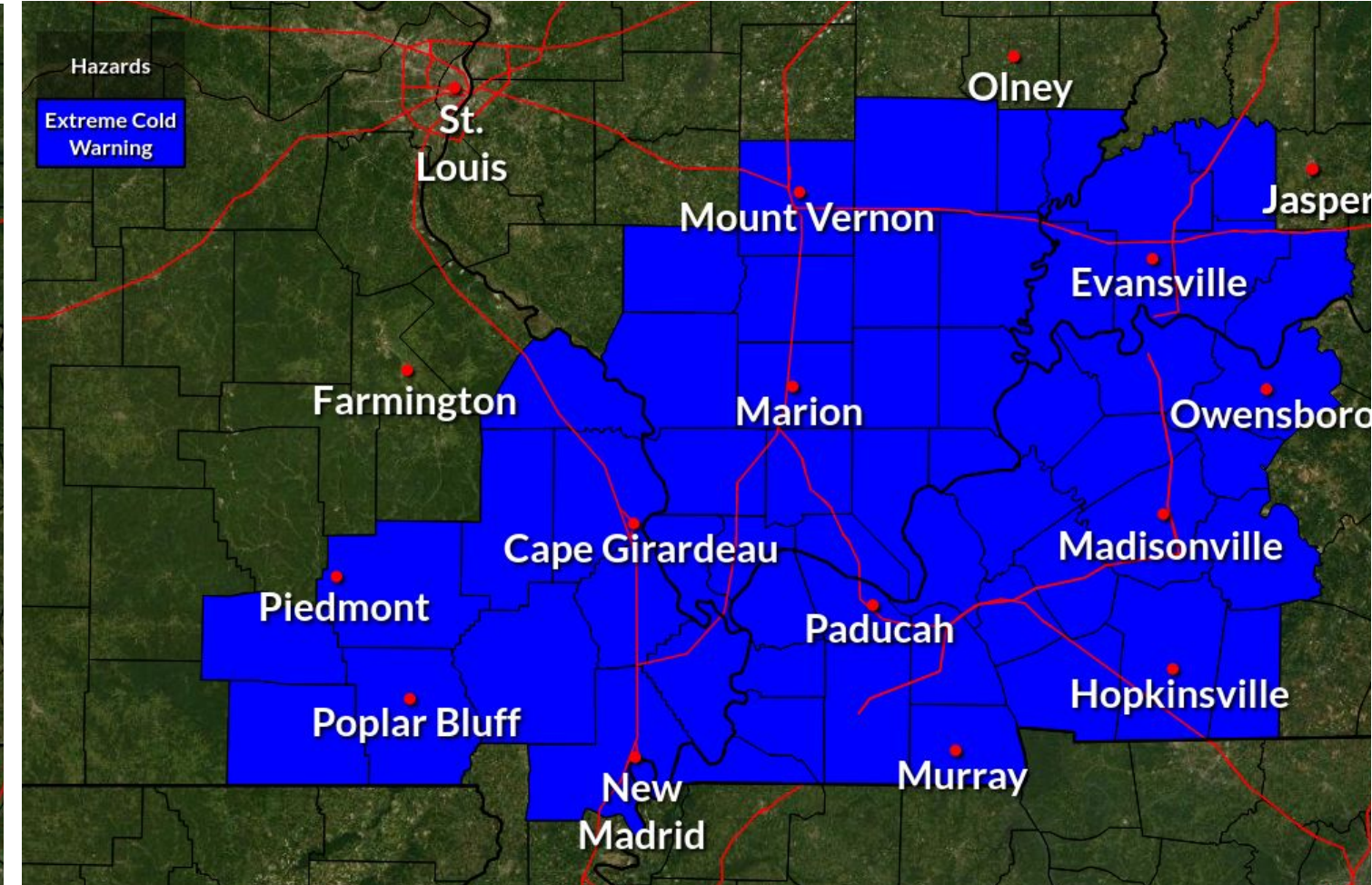
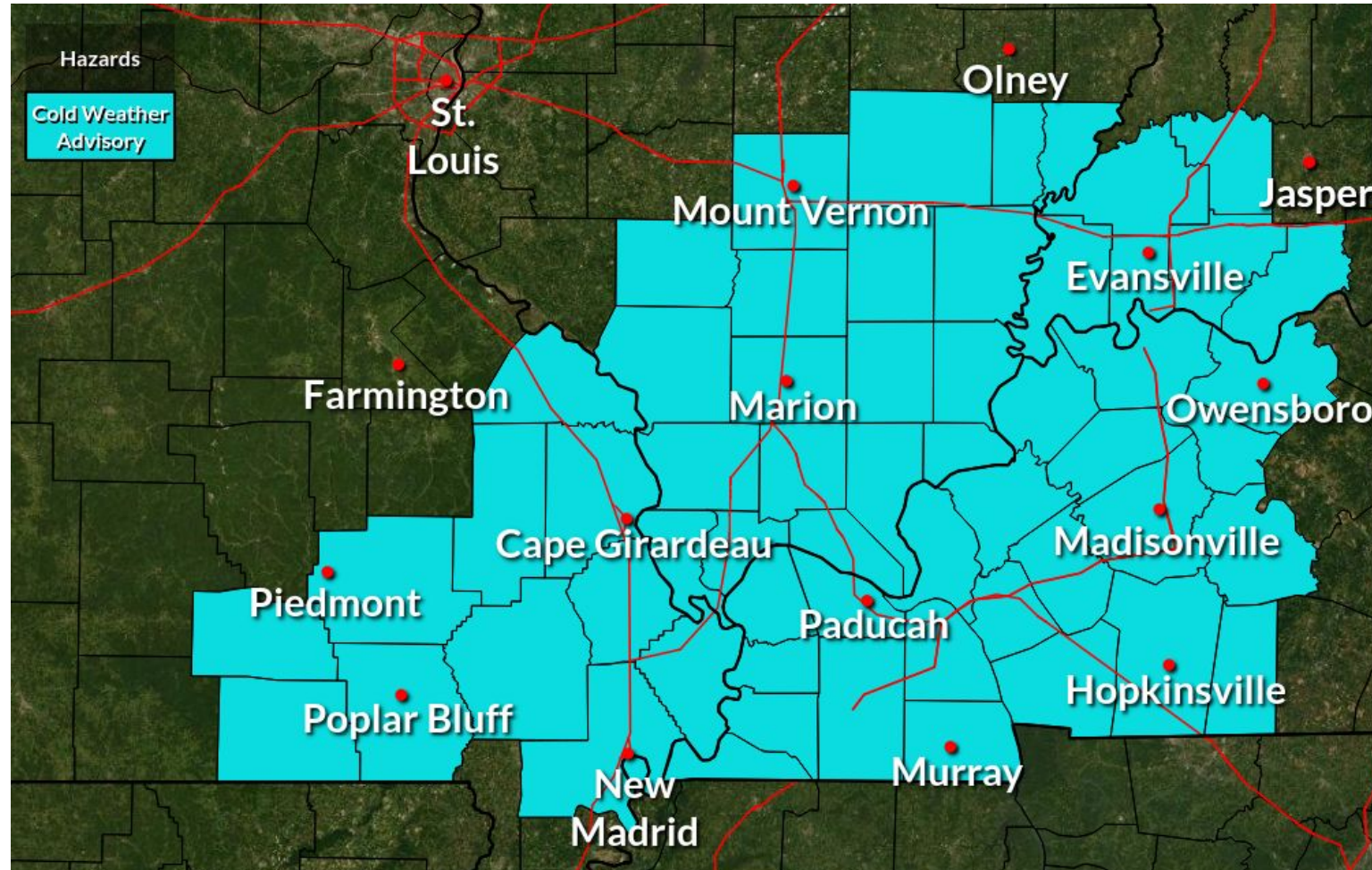
January 25, 2026

2:04 PM CST

Prolonged duration of life threatening cold temperatures are expected through Tuesday morning

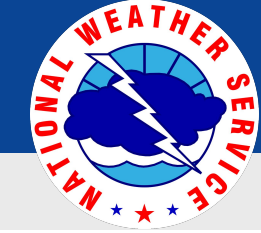
Cold Weather Advisory through this evening

Extreme Cold Warning late tonight - 10 AM Tues



**Wind Chills are forecast to range from -5 to +5 degrees through this evening.
 Wind Chills will then range from -5 to -20 late tonight through Tuesday morning.**





Prolonged Duration of Very Cold Conditions

January 25, 2026
2:04 PM CST

High temperatures mostly in the teens/20s and wind chills from the single digits to -15 for the next week

Temperature Forecast (°F)

		1/26	1/27	1/28	1/29	1/30	1/31	2/1
		Mon	Tue	Wed	Thu	Fri	Sat	Sun
Cape Girardeau	High:	16	29	26	21	20	20	26
	Low:	-5	4	2	4	5	-1	2
Hopkinsville	High:	18	33	32	24	20	24	32
	Low:	-6	11	4	6	5	-1	7
Madisonville	High:	12	25	23	19	18	18	26
	Low:	-1	3	0	1	2	-4	2
Marion	High:	14	29	25	19	19	19	26
	Low:	-5	6	-1	3	4	-1	3
Mount Vernon	High:	12	27	23	18	17	18	25
	Low:	-6	3	-5	1	3	-2	3
Murray	High:	14	27	26	24	21	21	28
	Low:	0	2	7	4	5	-1	4
Owensboro	High:	11	24	20	16	18	17	24
	Low:	-1	1	-3	0	2	-3	2
Paducah	High:	15	27	25	23	21	21	27
	Low:	-1	4	3	4	4	-1	2
Poplar Bluff	High:	19	31	28	25	22	22	27
	Low:	-3	2	5	4	6	-1	1

Wind Chill Values

	1/25 Sun				1/26 Mon				1/27 Tue											
	12pm	3pm	6pm	9pm	12am	3am	6am	9am	12pm	3pm	6pm	9pm	12am	3am	6am	9am	12pm	3pm	6pm	9pm
Cape Girardeau	-2	-2	-3	-6	-11	-16	-17	-10	2	5	-6	-9	-10	-10	-9	1	17	22	18	11
Hopkinsville	-3	1	-2	-8	-13	-16	-18	-9	3	7	-1	-3	-1	3	6	12	24	24	19	11
Madisonville	0	-1	-1	0	-2	-11	-14	-12	-4	1	0	-10	-8	-7	-6	1	11	15	13	11
Marion	-4	-4	-4	-6	-12	-17	-19	-14	-2	3	-4	-9	-8	-7	-6	2	15	19	16	9
Mount Vernon	-3	-2	-4	-8	-14	-19	-20	-15	-4	0	-7	-12	-10	-7	-5	2	14	13	10	3
Murray	0	0	-1	-2	-3	-10	-13	-9	0	5	2	-8	-9	-9	-9	1	14	18	16	14
Owensboro	-1	-1	-2	-1	-3	-11	-15	-13	-7	-3	-8	-12	-12	-11	-9	-2	9	14	12	6
Paducah	0	1	2	1	-3	-10	-11	-6	2	7	4	-4	-5	-5	-5	3	15	19	17	13
Poplar Bluff	1	2	0	-3	-10	-14	-15	-8	7	9	-3	-10	-10	-11	-10	2	19	24	18	12



If you absolutely must travel...

CHECK CURRENT ROAD CONDITIONS. DEVISE ALTERNATE ROUTE IF NEEDED.

SCRAPE OFF SNOW/ICE

SHARE TRAVEL PLANS WITH FAMILY

PACK AN EMERGENCY KIT

WINTERIZE VEHICLE

GET THE LATEST WEATHER FORECAST



DRESSING FOR COLD WEATHER

 adding layers will help keep you warm as the temperature drops

CHILLY



COLD



EXTREME COLD



weather.gov/safety

Prevent house fires due to alternate heat sources

Plug only one alternate heat source into an electrical outlet at a time. Do not use extension cords or power strips. Make sure the cord is not damaged.

Keep alternate heat sources at least 3 feet away from anything that can burn or ignite.

Turn off your alternate heat source (i.e., space heaters) and blow out candles before leaving a room or going to sleep.

Have a qualified professional clean/inspect your chimney.

Never use a gas stove, oven or outdoor grill to heat your home.



National Weather Service Paducah, KY



Six Basic Steps for Properly

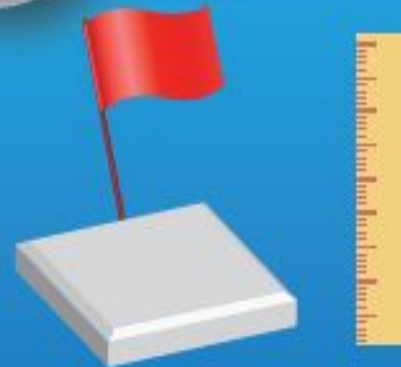
MEASURING SNOW



Accurate and timely snowfall measurements are extremely important to your National Weather Service office, your community, local media, and many others. Here are the six steps you need to know for measuring snow:

1

Supplies



Ruler or yard stick
24" X 24" white board, flag

2

Planning



Find an open area away from tall objects, but sheltered from wind

3

Set-up



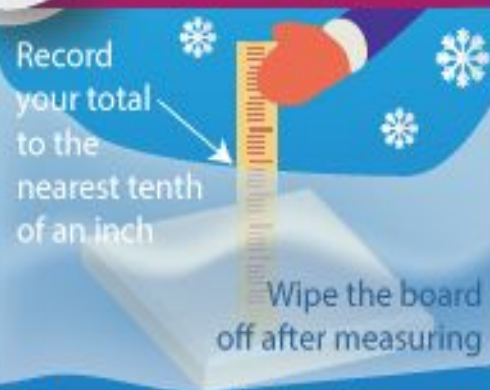
Set up before snow begins



Put your board out and mark it with the flag

4

Measuring Snow



Record your total to the nearest tenth of an inch

Wipe the board off after measuring

Measure once daily at the same time, after measuring place the board on top of snow

5

When Snow Stops



Measure as soon as the snow stops to avoid lower totals due to melting, settling and drifting

6

Reporting



weather.gov

social media

SEND us your report!